



**United States Coast Guard Auxiliary**  
**PREVENTION (Marine Safety) DEPARTMENT**  
**NAVIGATION SYSTEMS DIVISION**  
**AN MONTHLY REPORT 08-04**  
**FIRST NORTHERN AID TO NAVIGATION TEAM**  
**May, 2008**



**This newsletter is distributed to all Division Captains, Vice Captains and all Aid to Navigation Staff Officers. Please distribute to all your members.**

**During 2008, we have a lot of ATON/CU work to do:**

Federal **ATON** checks - **1,497**, 0 completed to date.

**PATON** verifications - **2,156**, 0 completed to date.

**Bridges** safety checks - **286**, 5 checked to date.

**Chart Updates** **56**, 0 submitted to date. (1 in process)

**Small Craft Facility** Updates **33**, 1 completed to date.

Check the break out for your Division on the chart on page two. How's is your plan to get this job done developing? Let us know now if you need help.

**Aid to Navigation PA Opportunities being scheduled at Long Island Light in Boston Harbor**

So far we have three, possibly five Public Relations opportunities available this summer at Long Island Light in Boston Harbor. The Quincy Bay Beach Association has requested a tour of Long Island Light and the new summer camp on Long Island has requested a two-day event with instruction on the history of Long Island and Long Island Light. This camp is provided for local school children as a learning experience. We will be looking for volunteers to coordinate and supervise these programs.

Since Division 5 has adopted Long Island Light, we will be looking for a crew to landscape the area and clean up the light house facility. This event should be scheduled in late May or early June. Tony Silvestri, SO-AN 05 is the coordinator of this project. Members of other adjacent Divisions are invited to participate.

Volunteers are requested to contact Frank Larkin at [FrankJLarkin@verizon.net](mailto:FrankJLarkin@verizon.net). Lunch is always provided by the Camp. We usually operate from 1000 to 1600.

**2008 AID TO NAVIGATION, BRIDGE, & CHART UPDATING ACTIVITY:**

This table covers all ATON, PATON, Bridge, & Chart updating reports received through March 4, 2008. APRIL 1, 2007 STARTED THE 2008 NOAA-NOS CHART UPDATING YEAR. Planned = District Plan for 2008. Checked / Verified = AUXINFO report for date stated. Chart Update and SCF Update stats from actual reports submitted through the DSO-AN.

**2008 ATON, BRIDGE, PATON AND CHART/SCF UPDATING SUMMARY REPORT**

CG ANT	DIV	ATONs			BRIDGES			PATONs			Chart Updates			SCF Updates		
		Planned	Chk'd	%	Planned	Chk'd	%	Planned	Verified	%	Goal	Actual	%	Goal	Actual	%
Boston	3	110	0	0%	13	1	8%	59	0	0%	5	0	0%	3	0	0%
	4	215	0	0%	14	0	0%	58	0	0%	5	0	0%	3	0	0%
	5	106	0	0%	37	5	14%	47	0	0%	5	0	0%	3	0	0%
	9	0	0	0%	19	0	0%	57	0	0%	1	0	0%	1	0	0%
	12	226	0	0%	7	0	0%	151	0	0%	5	0	0%	3	0	0%
	Total	657	0	0%	90	6	7%	372	0	0%	21	0	0%	13	0	0%
Woods Hole	6	0	0	0%	16	0	0%	0	0	0%	5	0	0%	3	0	0%
	11	0	0	0%	17	0	0%	0	0	0%	5	0	0%	3	0	0%
	Total	0	0	0%	33	0	0%	1103	0	0%	10	0	0%	6	0	0%
Bristol	7	0	0	0%	16	1	6%	0	0	0%	5	1	20%	3	1	33%
	8	0	0	0%	0	0	0%	0	0	0%	5	0	0%	3	0	0%
	10	2	0	0%	0	0	0%	0	0	0%	5	0	0%	3	0	0%
	Total	2	0	0%	16	1	6%	334	0	0%	15	0	0%	9	0	0%
South Portland	1	838	0	0%	75	1	1%	167	0	0%	5	0	0%	3	0	0%
	2	0	0	0%	86	0	0%	180	0	0%	5	0	0%	3	0	0%
	Total	838	0	0%	161	0	0%	347	0	0%	10	0	0%	6	0	0%
<b>Total First Northern</b>		<b>1497</b>	<b>0</b>	<b>0%</b>	<b>300</b>	<b>14</b>	<b>5%</b>	<b>2156</b>	<b>0</b>	<b>0%</b>	<b>56</b>	<b>1</b>	<b>2%</b>	<b>34</b>	<b>1</b>	<b>3%</b>

We can certainly use your help this year. Now is the time to get trained or update your knowledge so you will be ready to go when the boat's hit the water this Spring. Check with your FSO-AN, your SO-AN or your ADSO-AN for more information.

## The Division 7 Chart Updating Workshop was a great success with Forty Members from Eight Divisions in attendance.



A combination of class room presentation and a practical chart updating problem at a Warwick marina made for an interesting day for forty members from seven division. With worksheets and GPS sets in hand, the attendees spread out over Ponaug Marina documenting over 50 different tasks that comprised the total chart update plan.

While some problems were experienced, overall it was a great learning event for all, especially the instructors. A Small Craft Facility Report was prepared with a minimal amount of difficulty and has already been forwarded to NOAA. Here are some of the other activities that we discovered needed to be changed.

1. The team concept worked well. However, some members forgot their CU Worksheets and their GPS sets. Some GPS sets ran out of power during the event. We did have extra batteries available. Solution: We will appoint an on-scene leader in advance for the overall project and pre-identify individual team leaders.
2. Many teams did not use the CU Worksheets to gather their data. Some teams did not fill in all of the fields on their reports. Solution: In the future, we will plan to have one team check another team's worksheets and observations before we leave the area. This will ensure the completeness and accuracy of the observations.
3. Photos were a big problem. Directions for taking photos were not followed. Additional photos were taken which confused the overall situation. Identification of the photos was a problem. Some required photos were not taken. Some cameras were not capable of downloading to the computer. Solution: We will assign a separate PLN-Position Location Number to each required photo and a separate task on the worksheet.

Overall, we can conclude that the plan was good but there was difficulty with the control of the execution. We did learn that a well-planned event will minimize the time needed on scene. Experienced team leaders are needed in order to make the team experience more effective. An on-scene Project Leader needs to be identified where all questions and on-scene problems are funneled. Teams must follow the instructions on the CU Worksheets to the letter – no deviation. And, questions and instruction changes should be coordinated through the Team Leader and the Project Leader only.

Currently, Mike Quinn has a list of do-overs to complete before we submit the final Chart Update Report on the Marina to NOAA. Mike has posted a copy of the Small Craft Facility Report on the D1NR AN Web Site at [www.uscgaan.org](http://www.uscgaan.org). at Ponaug Marine. The complete Chart Update report and associated worksheets will be added when completed. Check out the activity photos that are posted there.

Overall, it was a great learning experience. Contact Frank Larkin at [FrankJLarkin@verizon.net](mailto:FrankJLarkin@verizon.net) if you want to run a similar event in your AOR. We hope to be running similar events in Division 6 in Fairhaven MA, in Division 4 at the Lynn Yacht Club and in Division 5 at Old Colony Yacht Club. SO-ANs take notice.

Members attending the CU workshop were: Instructors – Frank Larkin, Mike Quinn.

**Division 1** – Nancy Plunkett.

**Division 3** – Jeff James.

**Division 4** – Keith Weston, Ted Karr, Richard Skryness, Guy Simmons, Al Goldstein.

**Division 6** – Bill Beane, Ralph Dlouhy, Eunice Manduca, Carolyn Perruzzi, Jane Ulewicz, Jim Lambert, Rick Hoadley, Peter Screnci, Mary Ann Moran, Robert Kocor, Robert Millette.

**Division 7** - George Resnick, Charles Jenison, Garth Dudley, Tony Lombardo, Frank Cotter, Ditmar Jackson, Dennis Jacques.

**Division 8** – Frank Lucca

**Division 10** – Bob Ball, COMO Penny Pendergast, COMO George Pendergast, Brian Lacey, Sterling McClay, Mark Rachwal.

**Division 11** – Ernie LeBlanc, Guy Destefano.

**Division 12** – John Ginty, James Botsolis.

## **The AV Workshop at the April Conference produced 12 new Aid Verifiers for the First Northern PATON Program.**

Representing seven Districts, twelve AV Candidates completed their qualifications with another twelve qualified AVs sitting in to get upgraded on the new procedures that have been developed for the 2008 PATON program. The new AVs are: Brion Berghaus, Ted Chatham, Bruce Clarkson, Mark Cohen, Ken Cookson, Bob Cusack, Frank Lucca, Mary Anne Moran, Nancy Plunkette, Mark Rachwal, Richard Skryness, and Bob Thieve.

The other attendees were: Bob Nolan, ADSO AN Woods Hole, Jeff James, ADSO Boston, Joe Marshall, Frank Cotter, Lani York, Harry Cutts, Gordon Nash, Sterling Mc Clay, Frank Wiswall, Perry Luke and Guy Destefano. Frank Larkin and Mike Quinn handled the instruction along with Steve Pothier, the DPW 1 Paton Manager. Mike Quinn and Frank Cotter set up the ATON Display with new LED Lanterns, a foam nun buoy and some dayboards. We also extend our thanks to Chief Hause from ANT Bristol for the loan of his equipment for the display.

### **Attention Boat-Crew Members!**

Make your operational patrols more meaningful this season. Add ATON, PATON, Bridges, Charts and Small Craft Facilities to your patrol plans. You'll be amazed how the time will fly by, how much you will learn about your AOR and how much you will contribute to the Coast Guard, NOAA and your fellow mariners. We don't want to be the only ones having all the fun. Contact your SO-AN for more information.

# Gripes heard around the docks

**“The reason that I don’t submit chart update reports is that they never get on the charts.”**

That was true in the past for a bunch of reasons. Mostly, because the quality of the reports submitted were below par. In fact, most were either unreadable or not understandable.

This is not true now. We have a completely revamped program developed with NOAA with new forms and worksheet for reporting, along with a new guideline for taking fixes and depths. A new procedure was prepared for taking and reporting photos. If you haven’t seen the new Chart Updating and Small Craft Facility program material, you can view and download it from the D1NR Web Site at [www.uscgaa.com/](http://www.uscgaa.com/). We are receiving great feedback from NOAA on our early reports.

Since NOAA is a government agency, and we are attempting to correct and update government documents, it is necessary to provide positive proof of all submissions. The fun of Chart Updating is searching out and providing this evidence. Plan to attend a Chart Updating Workshop, and get trained. There are hundreds of opportunities that need correction.

By the way, some chart corrections have to be verified by NOAA, themselves. However, by making reports we get our items on the checklist for the next time that NOAA is in the area.

## **Reporting Bridge Discrepancies – a new instruction.**

There is a field on the “Bridge Discrepancy Report” that is about two-thirds of the way down the “Update Form,” that asks for a **Yes** or **No** response to **“DISCREPANCIES FOUND ON THE BRIDGE (Enter comments here).** There are two important purposes for this field.

**First** – This field lists all of the discrepancies that were reported the last time that this bridge was checked. Be sure to review the information in this field and comment whether the discrepancies have been corrected or still exist. If you ignore this information, you will receive an e-mail from the DSO-AN requesting your observations on the previous discrepancies.

**Second** – If you check YES, list all discrepancies that you observe on the bridge in this area. Do not update the field named, **“BRIDGE CHECK / SURVEY REPORT and prior reporting activity.”** This is the bridge history field and it will be updated by the DSO-AN prior to updating the database and informing the CG Bridge Branch of your report.

**Photos** are invaluable evidence of any problems that you observe on a bridge. E-mail your digital photos to [FrankJLarkin@verizon.net](mailto:FrankJLarkin@verizon.net). The photos will be reviewed and forwarded to the CG Bridge Branch with notification of your report. Follow the new guidelines got taking photos that can be found on page 13 of the CU02 – Chart Updating Study Guide.

**Class 4 Bridges – Do not report Class 4 Bridges.** They were assigned this classification so we wouldn’t have to make reports on them. Class 4 reports are not forwarded to the Bridge Branch. When you review your District’s bridge page, you have the opportunity to lock out Class 4 bridges from view. Answer YES and avoid viewing Class 4 bridges.

## **With all reports going direct to the source, what should a FSO-AN do?**

The answer is manage and plan. This also goes for the SO-AN. As the next section of this newsletter reports, nothing happens without a plan. As a FSO or SO-AN, if you can’t plan and manage, perhaps you are in the wrong job. Before you go, you should know that both planning and managing can be learned. Most people are not born with these skills. Read on!



## **NOTE to all AN Staff Officers:**

May is the best time to start executing your ATON/CU Program for 2008. How do you plan to get your job done?

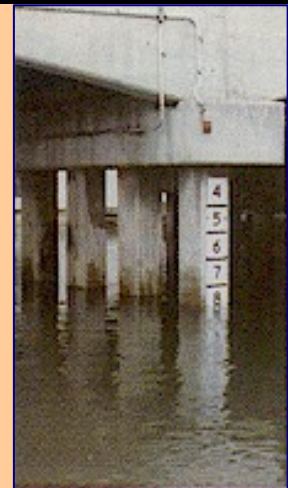
**Planning is essential!** Without a plan, nothing ever gets done. Don't wait. If you need help, don't be ashamed to ask for help. You are not expected to know all the answers. That's why we have a talented

District Staff that can get you the answers. However, we can't help you until you ask. **Start working together on this! There is no problem too small or too big that we can't handle for you.**

### **MAY AN STAFF OFFICER ACTIVITY CHECK LIST**



Here are the AN Tasks that you should be reviewing with your team members during May. Include the progress that you make as part of your monthly AN report.



**Start your on-the-water Federal Aid, and Private Aid Verification activities.**

- You can begin this process as soon as the boats get in the water.
- You don't have to wait for the official SAR season to begin.

**Conduct your Flotilla Workshop Training programs.**

- Do not hesitate to ask for assistance with these programs.
- The District Staff has a "dog and pony show" for every occasion and will travel.

**Start working with the Operations members to encourage their assistance with your planned Federal Aid checking activity.**

**All sections of your AN Program should be operational at this point including the AUXDATA part.**

**Get in touch with your SO-IS to ensure that they understand the AN reporting procedures on the 7030 forms.**

**AVs participating in the Web-Based Private Aid System are able to print out the Private Aid Verification Forms from their home PC, and are able to report their observations by the same method—their home PC.**

- Be sure to check the PATON's deployment dates. Many PATONs are not deployed until May 15 or later.

**Check that your PATON access code still works.**

- Contact your ADSO-AN, if you have any problems.

□ **It's time to start checking the bridges.** Review the Bridge Database at [www.uscgauxnh.org/aton/](http://www.uscgauxnh.org/aton/)

- It is always best to check out all bridges with lights and other safety equipment early in the season so that the bridges owners, upon notification by the Bridge Branch, can make the necessary repairs.



We're ready to start some PATON and BRIDGE training patrols in Division 4 out of the Danversport River area. Perry Luke's boat is ready to go.

There's probably room for 4 or 5 trainees aboard.

Contact SO-AN Al Goldstein to sign on for this spring training.

Let the DSO-AN know when you are ready for the first trip.

## COAST GUARD LIGHT LIST PRODUCTION FROM THE INTEGRATED AIDS TO NAVIGATION INFORMATION SYSTEM (I-ATONIS) DATABASE

### A. TITLE 33 PART 72 CODE OF FEDERAL REGULATIONS

### B. COMDT COGARD WASHINGTON DC 211303Z JUL 05/ALCOAST 380

#### 1. BACKGROUND:

**A. REFERENCE** A requires the Coast Guard to publish all volumes of the Light List annually with the exception of Volume V, which is published bi-annually since 1985 the National Geospatial-Intelligence Agency (NGA) has produced the Light List using a NGA database containing Coast Guard data.

**B. REFERENCE** B announces the deployment of the Integrated Aids to Navigation Information System (I-ANTONIS). The latest release of I-ATONIS (Version 1.5, Released 24 January 2008) includes the functionality to generate the Coast Guard Light List directly from the I-ATONIS database.

#### 2. DISCUSSION:

A. With the capability of generating the Light List directly from I\_ATONIS, the Coast Guard will no longer utilize NGA. Beginning in 2009, all future editions of the Coast Guard will be

generated directly from the I-ATONIS database and published by the Coast Guard Navigation Center (NAVCEN).

**B.** As a limited test of this capability, Volume V will be published from the I-ATONIS database in order to identify and resolve any process issues that may be present. This volume will be released in Summer, 2008.

**C.** The transition to publishing directly from I-ATONIS data provide the Coast Guard with greater control over the annual timing of the release of the Light List. To provide the best service to the mariner, the Light List will be published at the start of each calendar year. Since the 2007 Light List was not published until late in the Fall of 2007, the Coast Guard will not publish a 2008 Light List. The 2009 Light List will be published in January of 2009 and will be corrected through the final 2008 LNM-Local Notice to Mariners. This annual cycle will be adhered to in all subsequent years.

### **3. ACTION:**

**A.** It is essential that information contained in the 2009 Light List is accurate. Each District (DP) shall certify the accuracy of the information contained in the I-ATONIS database, which will be published in the Light List. For all applicable aids within their area of responsibility (AOR). Provide certification via message traffic or memo to CG-5413 no later than 15 September 2008. Since Volume V is scheduled for release in Summer 2008, I-ATONIS data used to generate Volume V shall be certified accurate by District Eight (DP) no later than June 2008.

**B.** Job-Aids to assist in the certification process are available at: [HTTP://IATONIS.USCG.GOV/ATNSWEB/ATONIS.SHOW\\_SUPPORT](http://IATONIS.USCG.GOV/ATNSWEB/ATONIS.SHOW_SUPPORT). In addition, I-ATONIS specialists from the NAVCEN Charting Division will be available to assist districts with data certification. For further information, contact Mr. Gene Diotalevi at (703)-313-5847 or Eugene j. Diotalevi at USCG.MIL.

### **4. CONTACT INFORMATION:**

**A.** Questions concerning the action required by this message should be addressed to CDR. Erik Anderson (CG-5413) at 202-372-1546.

**B.** Questions concerning the I-ATONIS job aids and best practices to certify the data should be addressed to NAVCEN: Marie Sudik at (703)-313-5813 or Dave Amburn at (703)-313-5820.

**C.** I-ATONIS technical issues should be addressed to COMDT (CG-7612): Jeff Yarosh at (202)-372-2492.

### **D. I-ATONIS/APPS**

Support issues should be addressed to OSC Customer Support at 1-877-872-4797.

**5.** RDML J. A. WATSON, DIRECTOR OF PREVENTION POLICY, SENDS.

**6.** INTERNET RELEASE AUTHORIZED.

## **SAFETY ZONES-MA-BOSTON-ATLANTIC OCEAN-NORTHEAST GATEWAY-DEEPWATER PORT (REVISED)**

The Coast Guard is establishing two temporary safety zones 500 meters around the primary components, two independent submerged turret-loading buoys, of Excelerate Energy's Northeast Gateway Deepwater Port, Atlantic Ocean, and its accompanying systems. The purpose of these temporary safety zones is to protect vessels and mariners from the potential safety hazards associated with deepwater port facilities. All vessels, with the exception of deepwater port support vessels, are prohibited from entering into or moving within either of the safety zones. The safety zones include all navigable waters of the United States within a 500-meter radius of the two submerged turret loading buoys of the Northeast Gateway Deepwater Port located at 42°23-39- N, 70°35-28- W and 42°23-55- N, 070°36-48- W, however mariners are advised to

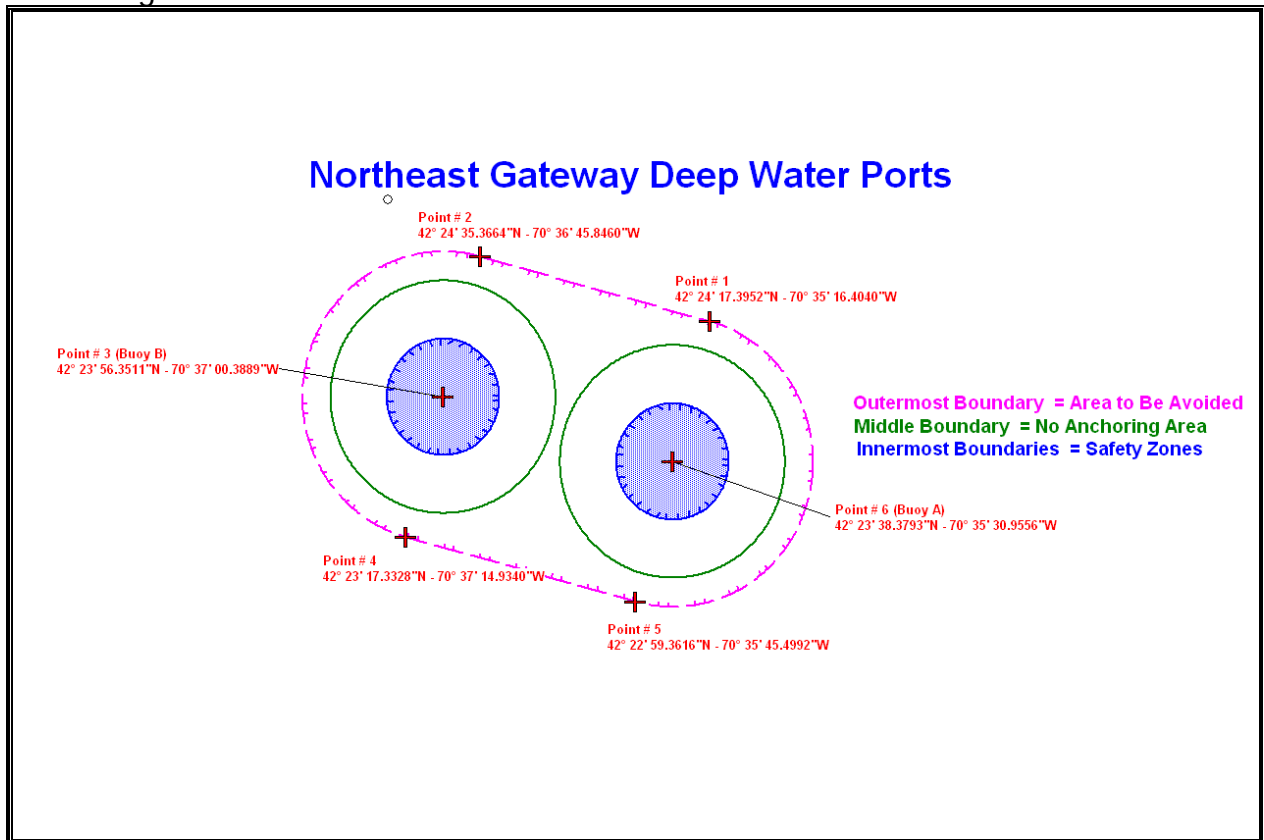


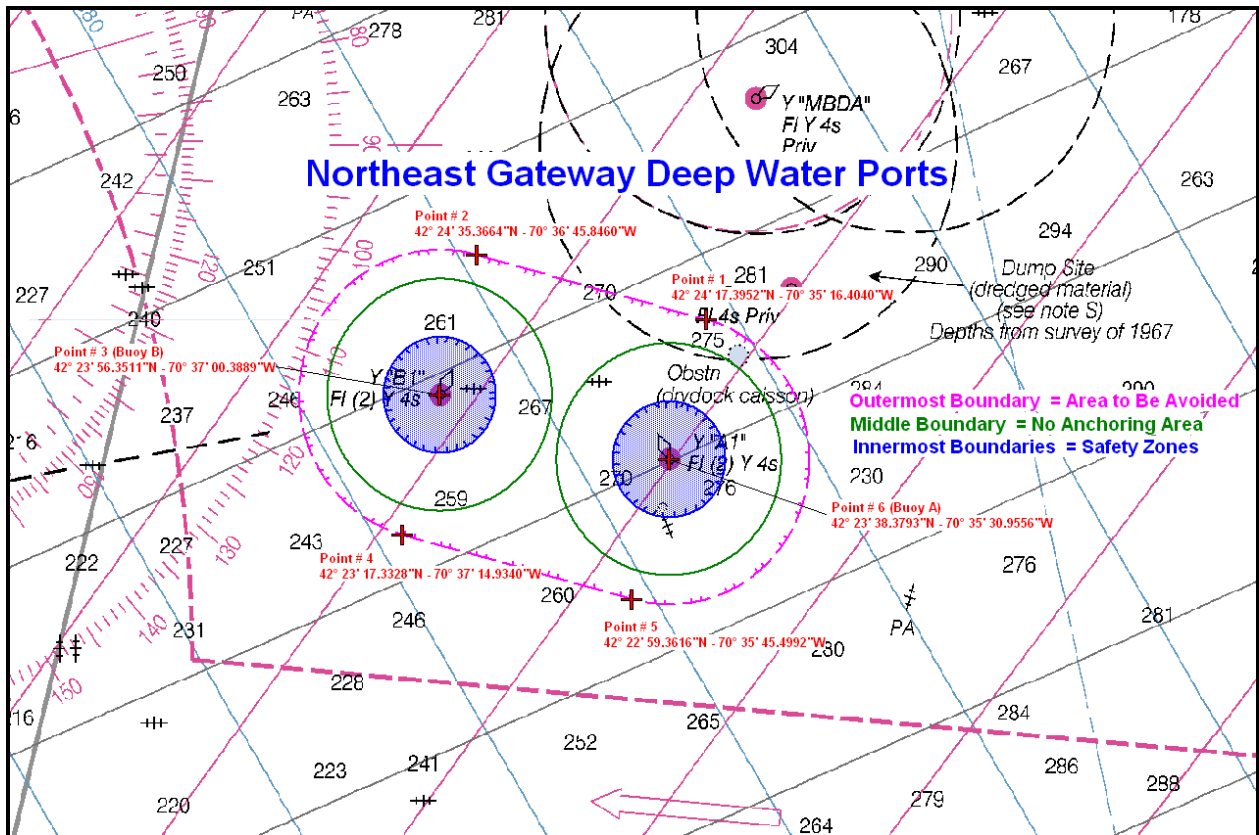
avoid the area within a full 1,000-meter radius of these two locations due to potential safety hazards associated with the underwater infrastructure. Additional details regarding this regulation can be found by going to [www.regulations.gov](http://www.regulations.gov) and doing a search for "Northeast Gateway." LNM 03/08



**This is a hot issue for many mariners that is why it is repeated.  
Please pass the word at your marinas and yacht clubs.**

Check out the diagrams and chartlets below. These aids are private aids and have been assigned to ANT Boston's AOR.





## EPIRB Notice – Pass it on.

The US Coast Guard has issued a press release <http://www.uscglosangeles.com/go/doc/830/198867/> reminding mariners that older model Emergency Position Indicating Radio Beacons (EPIRBs) that broadcast on 121.5 MHz or 243 MHz will not be monitored by satellite as of **February 1, 2009**. Effective that date, the satellites will only monitor for radio beacons broadcasting on 406 MHz. Some of the newer EPIRBs are equipped with embedded GPS, which will automatically signal the location of the distress. (4/18/08).

Regards,

The USCG Navigation Center Team <http://www.navcen.uscg.gov/>

## ATON/CU Team activity in First Northern – please join us!



Every Auxiliarist, while underway on an OPFAC, should be checking every ATON, PATON and Bridge that they encounter for discrepancies, and also be checking the shoreline for charting errors as well as providing update reports on all Small Craft Facilities in their AOR.

Check out the First Northern Aid to Navigation Web Site at [www.uscgaan.com](http://www.uscgaan.com) for anything you need to know about our program. Send us a digital photo for our "ATONers in Action" web page.

**Please distribute this newsletter to other members of the Coast Guard and Coast Guard Auxiliary.**

*Under the Privacy Act of 1974, all information in this newsletter may only be used for official purposes. Any other use is a violation of law. This newsletter was prepared and published by the First Northern Aid to Navigation Team –DSO-AN INR.*

Distribution of this Newsletter to other members of the Coast Guard and Auxiliary is encouraged.