



OpenCPN CHART NAVIGATION SOFTWARE INSTALLATION and CONFIGURATION

1. Downloading the Open/CPN Software

Step 1 - Open the D1N Navigation Systems website at www.uscgaan.com.

- Scroll down to the “OpenCPN” web page in the left-hand column. [Click on it.](#)
- *If you do not have a windows system, choose* Free ChartPlotter and GPS Navigation Software.

OpenCPN Software and Plug-in's

Click here for [Windows version 3.2.2](#) ← Choose this one.

Click here for [MAC version 3.2.2](#)

[OpenCPN Search Pattern Plug-in](#)

Step 2 - **Click** on the link for **Windows version 3.2.2** chosen in **Step 1**.

- It will ask you to Run or save it. Click on Save
- Now select a location on your computer to save this program, it is recommended you create and use the Download directory [c:\download.]
- *Your computer will now download the Navigation Program. (opencpn_3.2.2_setup.exe) When it has finished downloading, close Internet Explorer.*

Close the Internet.

Step 3 - **Go to the location** on your computer **where you saved the program** - **c:\download** in Step 2.

Click on COMPUTER

Favorites | Hard Disk Drives (2)

Downloads | OS (C:)

Recent Places | Devices with Removable

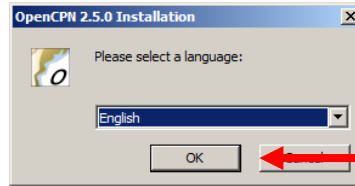
Click on Downloads

opencpn_3.2.2_setup.exe	12/16/2013 9:51 PM	Application	36,197 KB
-------------------------	--------------------	-------------	-----------

Double Click on this ICON.

Click on RUN.

- The install program opens asking what language you would like to install. ENGLISH is the default.



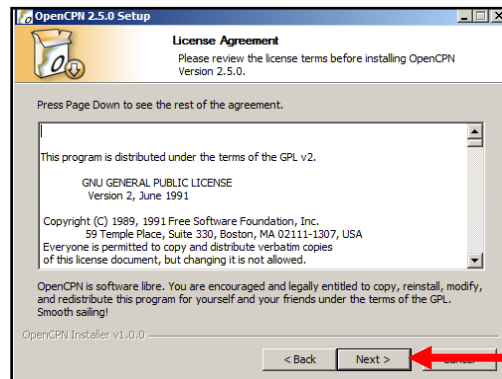
Click on OK to continue

- The next window that opens is the setup welcome screen.



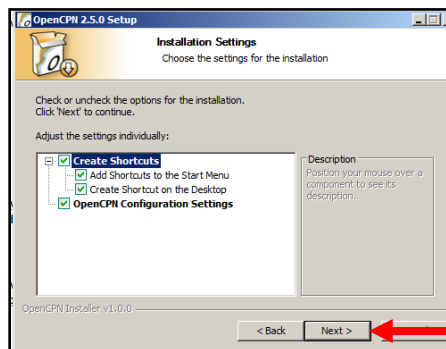
Select NEXT.

- The next window that opens is the license agreement.



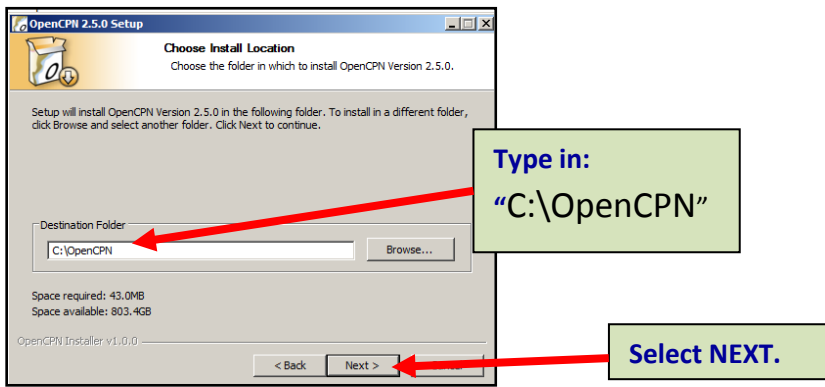
Select NEXT.

- The next window that opens is the installation settings screen which accepts the defaults.
For advanced users you may select other options.

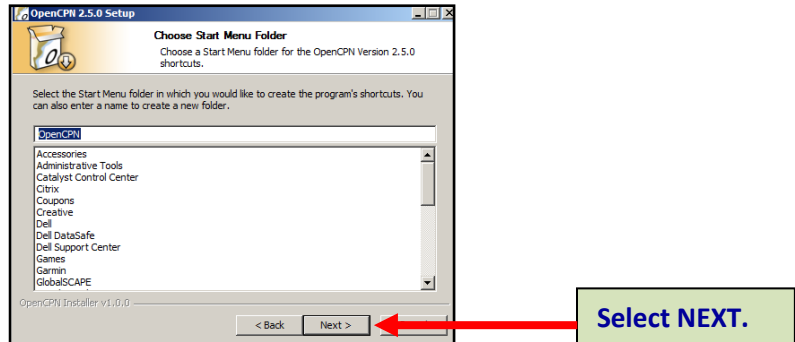


Select NEXT.

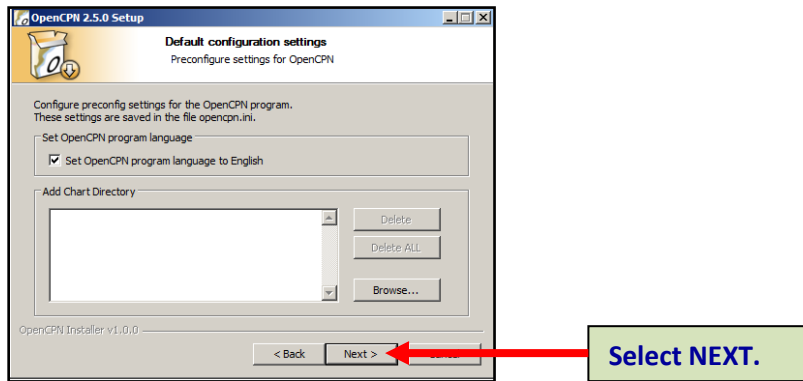
- The next window is the install location. Here you will change the default setting in the space Destination Folder.



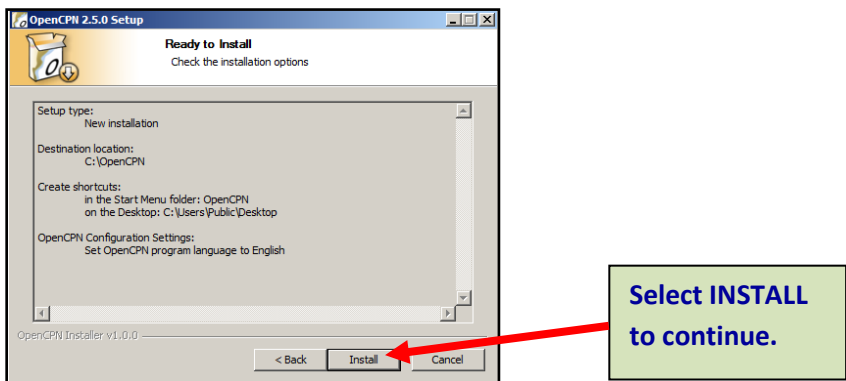
- Next window is the start menu folder which accepts the defaults.



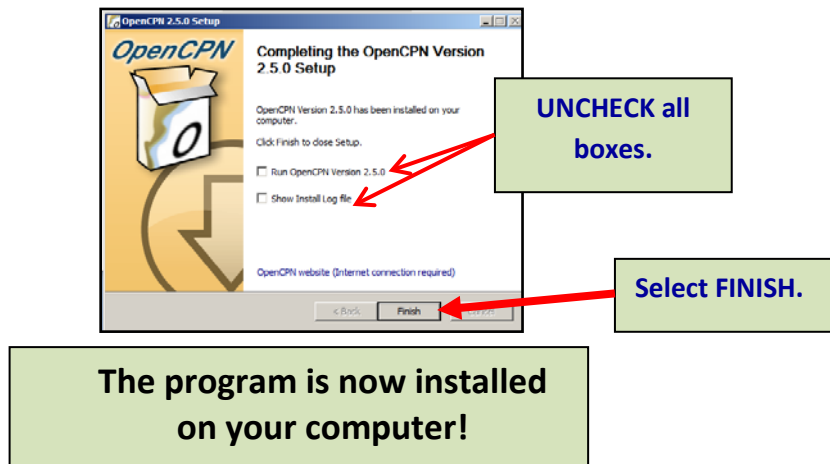
- Next window is for the default configuration settings which accepts the defaults.



- The last window that will open is the Ready to Install page of your install options. **Select INSTALL** to continue.



- Once the install is completed:



**In order to work, the program has to have some charts.
The next procedure gets the available, latest CHARTS for you.**