



OpenCPN CHART NAVIGATION SOFTWARE INSTALLATION and CONFIGURATION

In order to work, the program has to have some charts.
This procedure gets the latest available CHARTS.

Making a place on your computer to store the charts for the navigation program.

You need to create a folder on your computer to save the charts for the program to access. This activity is performed only once. Follow this procedure exactly, including using the suggested file name, "Charts." All follow on instructions refer to this file name.

Step 1: Use your "MY COMPUTER" or "Start" icon to navigate to the C:\ hard drive. See the example below.

Step 2: Right click on the open white space at the right side away from the file names at the left.

Step 3: Select "NEW"

Step 4: Select "FOLDER"

Step 5: Check below where the system put a new file folder highlighted in BLUE.

Step 6: Using your keyboard. type in the word "CHARTS"

Step 7: Hit ENTER

This will be the directory (spot) where all your chart files will reside.

How to update OpenCPN charts on your Personal Computer

These charts are updated twice monthly on the Navigation Systems Web Site.

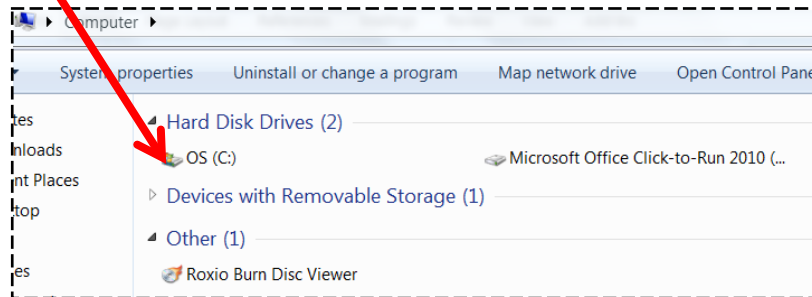
A. Open a "Charts" file.

This simplifies the whole process and standardizes for all AVs in the First District.

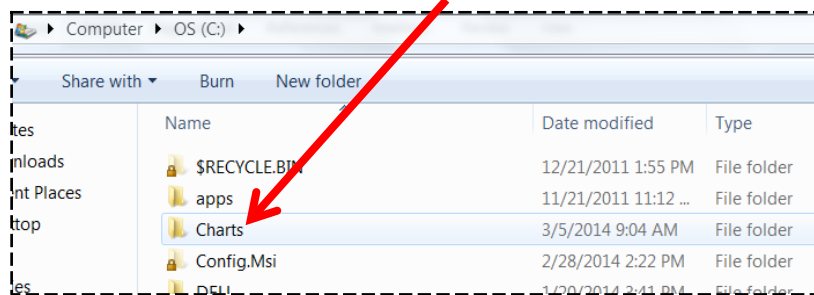
CAUTION: Be sure that OpenCPN is NOT running. If open, close it before you begin this process.

Step 1: [Click on your "Computer" file.](#)

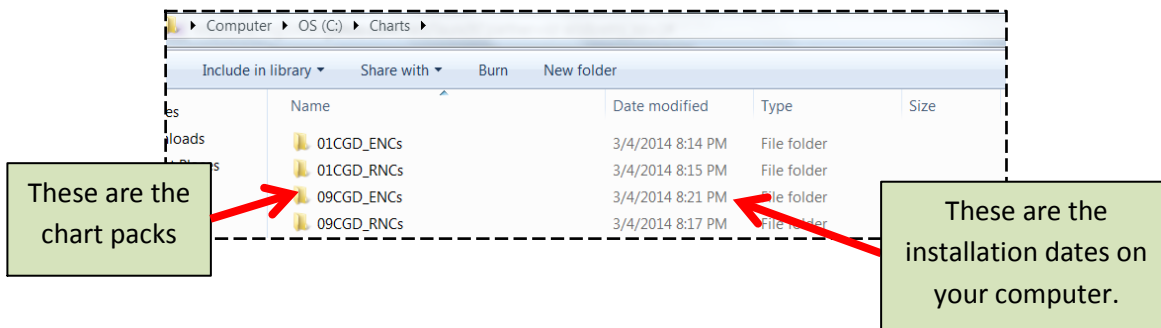
Step 2: [Double click on the drive.](#)



Step 3: [When the drive's detail appears, double click on "Charts."](#)



The "Charts" file will appear as shown below. Any existing Open/CPN chart packs that are on file will appear. Each chart pack will show the date when they were last downloaded.



Step 4: [Highlight all the files in the directory and delete them.](#)

The OpenCPN program must NOT be running when you do this deletion.

If this is a new install, the directory will already be empty. Move onto Section B.

A. Deleting the old chart files

Step 1: [Before you proceed to the next step, go back to the “Charts” file and delete all of the outdated chart files.](#)

Step 2: [Close the “Charts” file.](#)

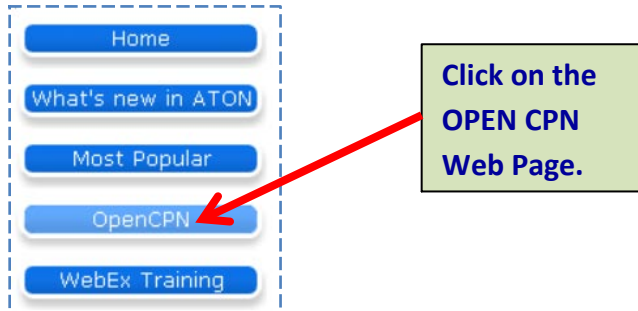
You are now ready to move to B. Selecting the charts for your AOR.

B. Selecting the charts for your AOR.

Updated Open/CPN Charts are provided on a twice-monthly basis in the Navigation Systems Web Site at www.uscgaan.com.

Step 1: [Select the Open/CPN Web Page.](#)

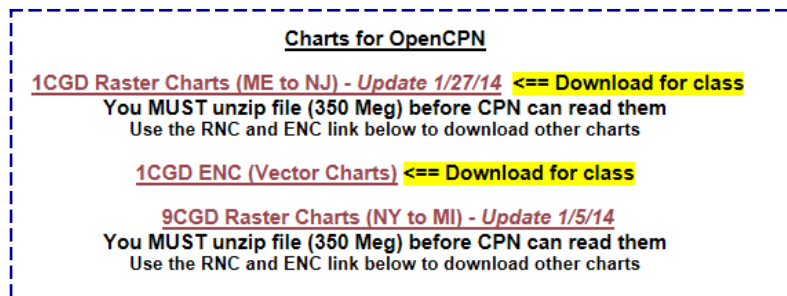
Log onto the D1NR Navigation Systems website at www.uscgaan.com. Select the “OPEN CPN” web page from the left-hand column.



All of the charts for First Northern have been bundled into chart packages for you. Each package will provide chart coverage from Northern Maine to Northern New Jersey. Division 15, Burlington has a special bundle termed “9CGD Raster Charts (NY to MI). The Division 15 charts are not in the standard chart bundle.

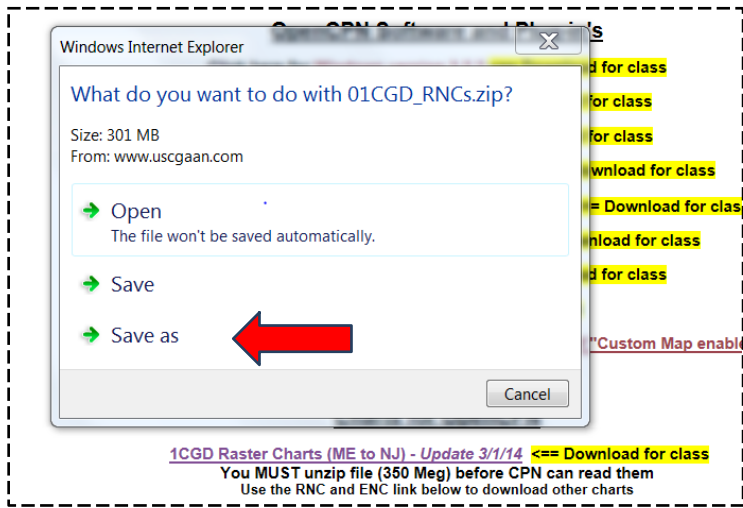
Step 2: [Scroll down on the “OPEN CPN” web page and click on “1CGD RASTER CHARTS.”](#)

These are LARGE files (350 Meg) so it will take some time to download depending on your internet speed. The key word for this process is patience. Wait for each download or update process to complete before moving to the next step.



Step 3: [Click on the chart link and select “SAVE AS” and save the files to your C:\charts directory](#)

The system will immediately start the saving process. Be patient, it may take a long while to complete (4 to 5 minutes) depending on your computer.



You can track the downloading process in the dialog box that is provided.



When the download is completed, the chart directory will look like this:

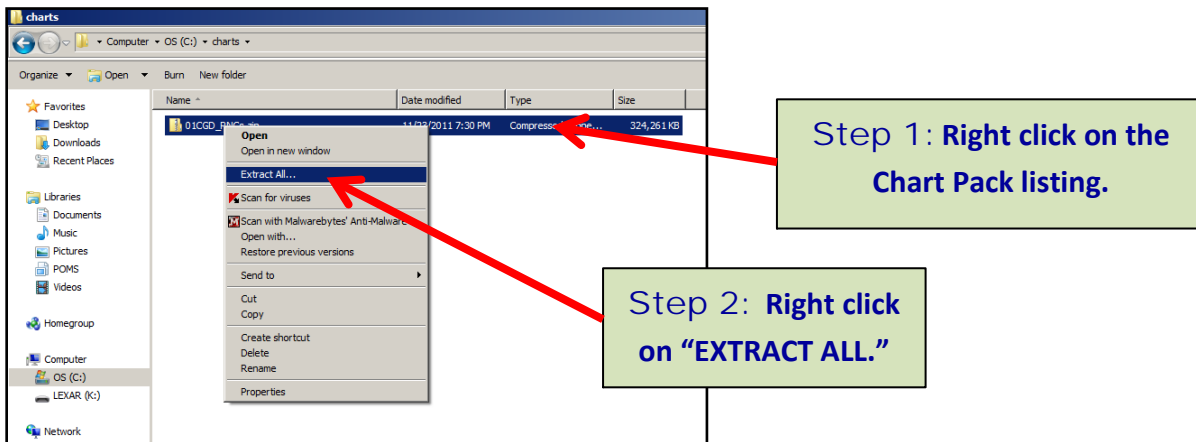
Name	Date modified	Type	Size
01CGD_ENCs	3/4/2014 8:14 PM	File folder	
01CGD_RNCs	3/4/2014 8:15 PM	File folder	
09CGD_ENCs	3/4/2014 8:21 PM	File folder	
09CGD_RNCs	3/4/2014 8:17 PM	File folder	
09CGD_RNCs	3/5/2014 9:04 AM	Compressed (zip...)	233,227 KB
CHARTCAL.DIR	3/4/2014 8:51 PM	DIR File	2 KB
reserved_channel	3/4/2014 8:51 PM	Windows Bitmap	
reserved_channel.kap	3/4/2014 8:51 PM	KAP File	

You are now ready to move to **C. Unzipping the Downloaded Chart.**

C. Unzipping the Downloaded Chart:

The downloaded chart files are zipped which means there are many files compressed into one massive file and you will have to **extract them** for OpenCPN to utilize the charts correctly.

- If you have Windows 7:

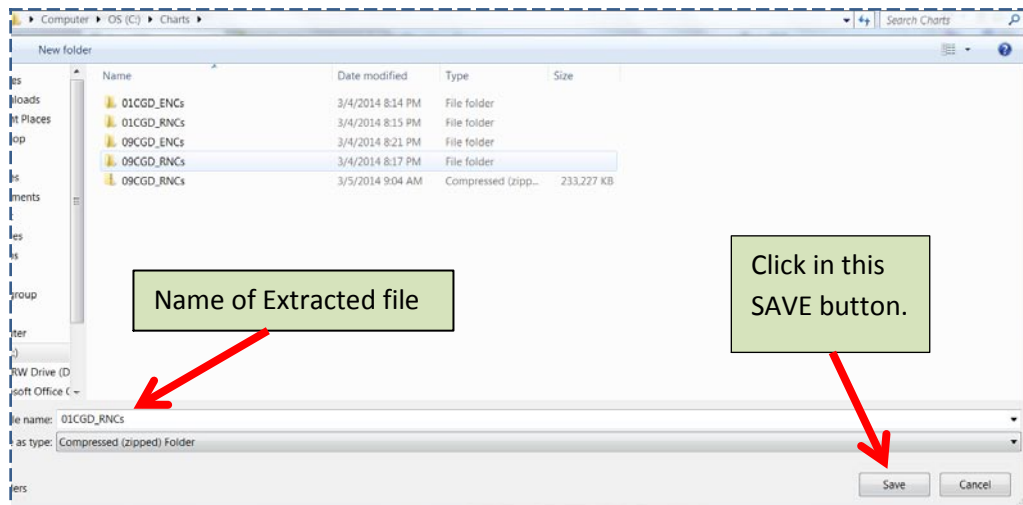


- If you have any other Windows version, you may have to use a freeware program like **7ZIP** or **WinZip** to unzip the files.
- You might have to install **7zip** if you cannot UNZIP the files.

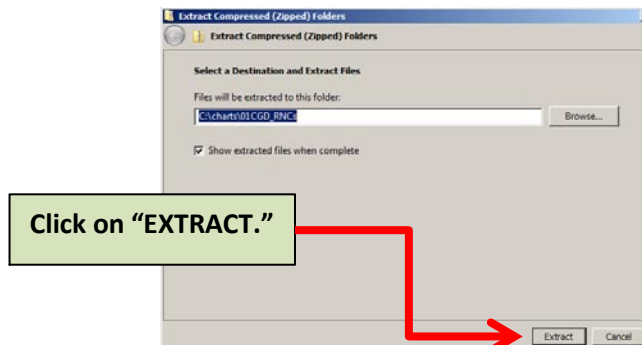
Step 3: The screen, as shown below, will appear. Since you are logged onto the "Charts" file, the selected listing will be downloaded to that file.

Click on the "SAVE" at the bottom right of the screen.

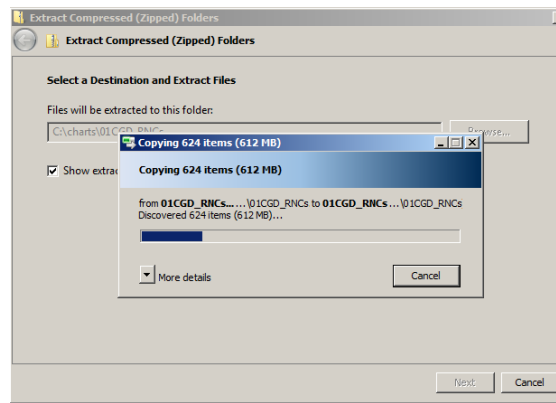
The default will be to extract into the current directory C:\charts which is what we want to do.



Step 4: **Now UNZIP the chart files in the folder for your charts.**



Once you click on “**EXTRACT**,” you can track the progress by observing the bar in the dialog box.



Once the file is extracted, the dialog box will close and you will see **new directories** that were created in your chart folder **C:\charts** called **01CGD_RNCs**.

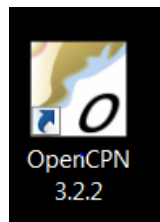
Hang in there we are almost done.

You are ready to **run the OpenCPN chart software** and to **tell it where to look for the extracted charts**.

D. Opening the newly downloaded chart files for Open/CPN usage. Start the OpenCPN the navigation program by:

Step 1: **Double click on the OpenCPN icon on your desktop.**

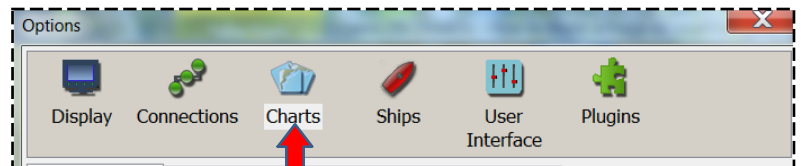
The Open/CPN charts will appear on the screen.



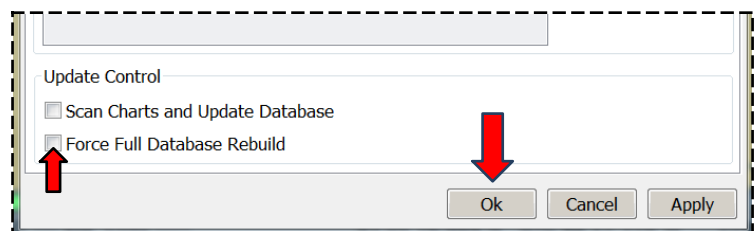
Step 2: **Click on the “Wrench” box in the top margin.**



Step 3: **Click on “Charts.”**



Step 4: **Check the “Full Force Database Rebuild” box’ Then, click “OK.”**



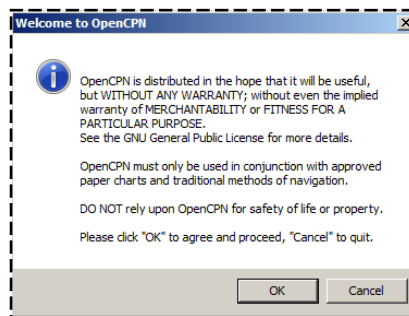
Step 5: **Have patience, wait.**

If this is your first time downloading charts, RUN the Navigation Program



Step 1: Find the Open/CPN file or ICON and double click on it.

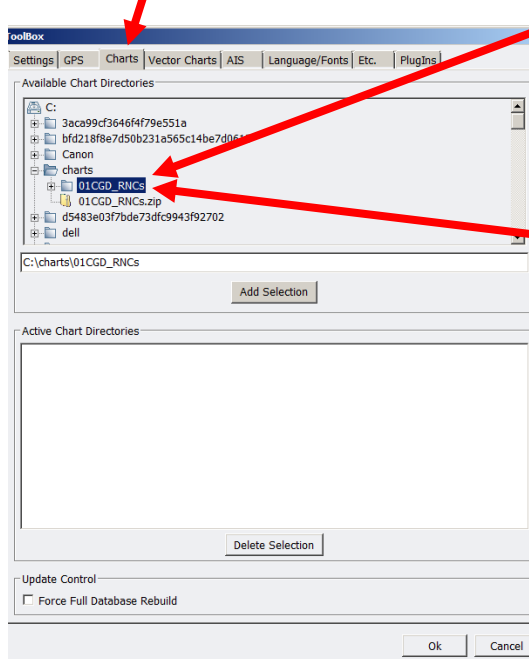
Step 2: The first time that you open the program you will see the welcome screen. Click OK and you will never see it again.



Step 3: The next message to appear is the "NO CHARTS INSTALLED" box, click OK

Step 4: The next screen to appear is the "TOOLBOX" settings. You now need to tell the program where the charts are located. [Click on the "Charts" tab from the top of the menu.](#)

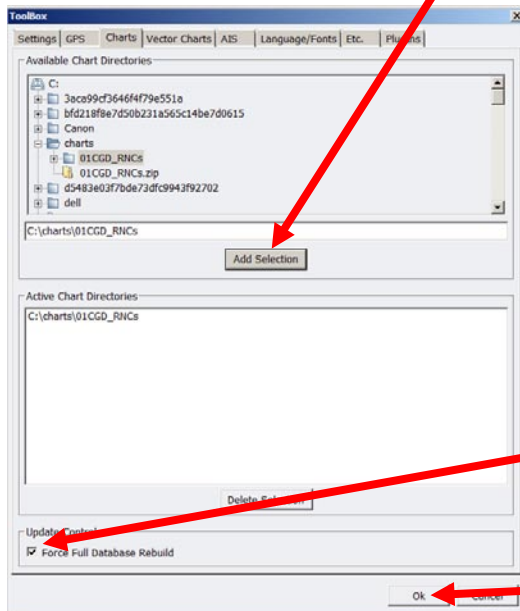
Step 5: [Now go to the C:\charts folder.](#) You will notice that one file says ZIP at the end and the other DOES NOT.



Step 6: [Select the file that does NOT have the ZIP at the end.](#) You can also verify you have the right file selected because there will be a small + to the right of the correct directory name (the + means there are more files below).

Step 7: [Click on the unzipped charts](#)

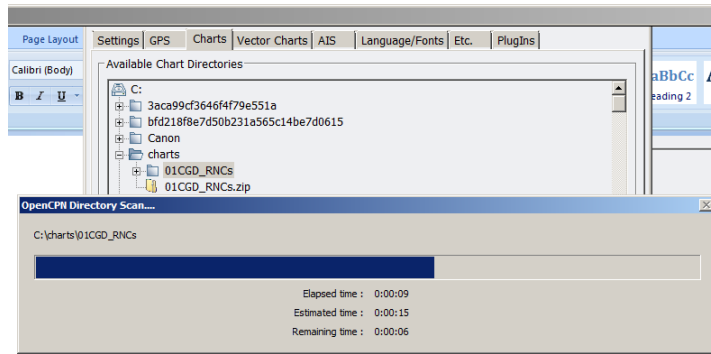
Step 8: [Next, hit the "ADD SELECTION" button.](#) You will see the directory being added to the ACTIVE CHART DIRECTORIES.



Step 9: [Put a check in the "FORCE FULL DATABASE REBUILD" box.](#)

Step 10: [Click the "OK" button.](#)

You are now opening the Open/CPN Navigation Program to use those charts on your computer.



You have now completed loading the CHARTS

Twice each month, the NOAA chart database is refreshed. Be sure to update your chart database at least monthly. Watch the www.uscgaan.com website for new edition dates of the charts or go to NOAA website directly.

Any questions or problems please contact:

Mike Quinn, SO-NS 7

401-737-5078

michaelsquinn@gmail.com